


**EDI
MENU**

 TABLE NUMBER:
Dining Time 1 Hour 45 Minutes
OPEN EVERY DAY MONDAY - FRIDAY 12PM - 10.30PM | SATURDAY 12PM - 11PM | SUNDAY 12PM - 10PM

 5% Discretionary service charge is added on the bill.
Lunch offers are from 12.00 pm till 5.00 pm

All you can eat buffet restaurant in Edinburgh

STANDARD HOT POT

CHILD
**LUNCH £23.99
DINNER £28.99**
**LUNCH £11.99
DINNER £14.99**

 SHOULDER
BEEF

 CHEF SELECTED
LAMB

 MARINATED BBQ
LAMB RIBS

 WILD VENISON
(NOT HALAL)


Chicken Breast

1 2 3 4 5 6 7 8 9 10 11 12

BOTTOMLESS SOFT DRINKS

£1.99 - PER PERSON

 COKE ZERO OR DIET / VIMTO / IRNBUR / SUNKIST
ORANGE / LEMON & LIME

FOOD ALLERGY NOTICE

 IF YOU HAVE A FOOD ALLERGY OR A SPECIAL DIETARY
REQUIREMENT PLEASE INFORM A MEMBER OF OUR
STAFF BEFORE YOU PLACE
YOUR ORDER.


HAPPY LAMB HOT POT

STEP 1 - CHOOSE A HOT POT SET

STANDARD HOT POT
DELUXE HOT POT

 CHOOSE BETWEEN 2 MENUS.
ALL STANDARD HOT POT ITEMS ARE INCLUDED IN DELUXE HOT POT.

STEP 2 - CHOOSE A BROTH | SINGLE / DUAL / TRIPLE

OUR BROTH CAN BE MADE VEGETARIAN OR HALAL. PLEASE INFORM THE SERVER.



CHICKEN

3 4 7 13 14 10


 SPICY
CHICKEN

3 4 7 13 14 10


 TOMATO
(NON VEG)

1 4 7


 SPICY SOUR
CABBAGE

1 7

STEP 3 - CHOOSE ITEMS FROM THE BUFFET

HAPPY LAMB SKEWERS
2 FOR £3.00 / 4 FOR £5.00

1 4 7 11 12 13


MONGOLIAN LAMB RIBS

£12.80

1 2 3 4 7 11 12


RICE CAKE WITH BROWN SUGAR SAUCE

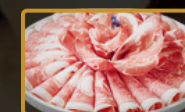
£4.80

1 2 3 4 7 8 9 13 14


**EXTRAS
CHEF SPECIALS**

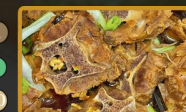
DELUXE HOT POT

CHILD
**LUNCH £31.99
DINNER £34.99**
**LUNCH £15.99
DINNER £17.99**
**EVERYTHING INCLUDED
FROM STANDARD HOT POT**

 SNOWFLAKE
BEEF SIRLOIN

 HAPPY SPRING
LAMB

 SUPERIOR
SHORT RIBS


RIB EYE

 1
7
10

 MARINATED
LAMB SPINE

PREMIUM A LA CARTE


**JAPANESE
WAGYU BEEF**
£48.00


FLIP PAGE

HOW TO HOT POT



EDI
MENU

HOW TO HOT POT

OPEN EVERY DAY MONDAY - FRIDAY 12PM - 10.30PM | SATURDAY 12PM - 11PM | SUNDAY 12PM - 10PM

Kitchen & buffet closes 45 minutes before closing times

All you can eat buffet restaurant in Edinburgh

STEP I



Select a Broth (Full Pot or Divided Pot)
Our Popular Hot Pot Broths Include:
Nourishing Marrow Chicken Broth
Spicy Marrow Chicken Broth
Rich Tomato Broth
Spicy Sour Pickled Cabbage Broth

STEP II

Select ingredients and dipping sauces which are included in the menu.

STEP III

Wait for the Broth to simmer(boil) before you begin cooking your ingredients.
Add your ingredients to the Broth gradually rather than dumping everything in at once.
Each of the ingredients at your table should be eaten piece by piece, though it is fine to cook sliced vegetables and meat at the same time.

STEP IV

Cooking noodles will thicken your broth and enhance the flavour, therefore we suggest cooking the noodles last so you can enjoy the noodles with broth at the end for the best dining experience.

COOK TIME

INGREDIENTS |

Reminder: The ingredients should not cook too long
Thinly sliced meats: 15-20 seconds
(Till colour fully changed)
Seafood/Noodles: 3-5 minutes
(Do not over cook seafood, keep stirring noodles in the pot)

OTHERS |

Meat Balls: 3-5 minutes (Cook meat balls longer for more flavour)
Mushrooms: 3-5 minutes
Tofu: 3-5 minutes
Starchy Vegetables: 5 minutes or more
Green Vegetables: 1-2 minutes (Cook root vegetables until they are soft)

FOOD IS LIFE, PLEASE DO NOT WASTE FOOD.
There is a small charge of £3.99 for children aged 2-5 years dining at the restaurant. Half price for children above 5 years and below 155cm. Children under 2 years eat for free. No drinks are included with the buffet. Leftover food cannot be taken away. Maximum seating time per table of 1 hour & 45 mins. Same set menu has to be chosen for table

Lotte Original 16.5% £10

This smooth Soju from Lotte is the world's first alkaline water-based Soju, with 0% sugar. Original flavour. 350ml

Lotte Flavoured 12% £10

We have a selection of flavoured Soju from Lotte, each delightfully distinct from another. The Grape and Peach are our favourites, let us know what your favourite is! 350ml

SOJU



DRINKS

BEERS

*Half Pint/Pint
Carlsberg Pilsner 3.4%
£3.10/£5.10
1664 Biere 4.6%
£3.25/£5.60
San Miguel 5.0%
£3.25/£5.60
Guinness 4.2%
£3.50/£5.75
Asahi 5% 330ml
£4.20
Tsing Tao 4.8% 330ml
£4.20
Corona 4.6% 330ml
£4.20
Kopparberg Cider 4%
500ml £5.25
Non Alcoholic Beers 0%
£3.50

PLEASE ASK FOR OUR:

Wine List
Premium Spirits List
Cocktail of the Month
Extended Drinks Menu

PLEASE DRINK RESPONSIBLY



FLIP PAGE

BACK TO MAIN MENU

All images are for illustration purpose only